

Softerra Adaxes Enterprise Directory Solution

SOX Compliance

make the complex simple



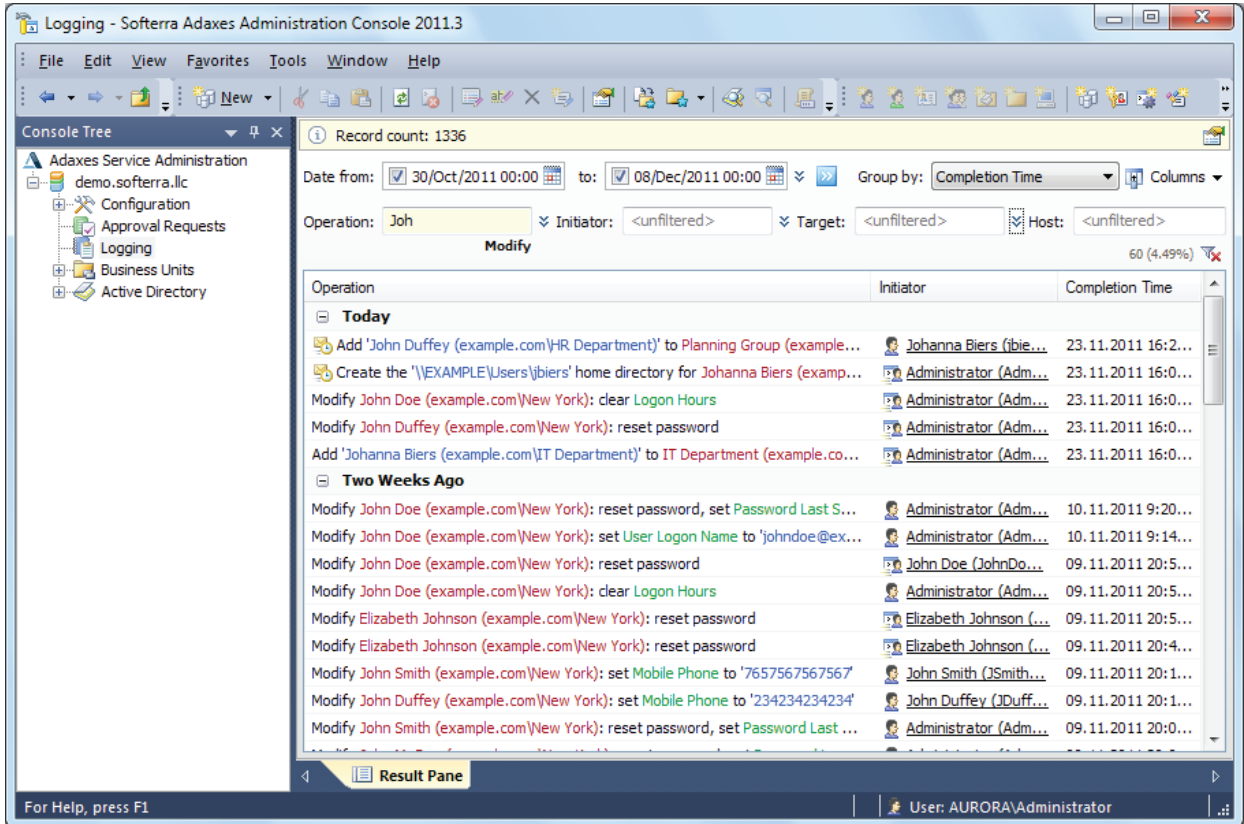
Comprehensive Reporting

Extensive list of Active Directory reports allows you to collect information on essential data in Active Directory. Reports related to inactive or disabled user accounts, users with non-expiring passwords, groups without members allow you to identify and eliminate security risks.

The screenshot displays a web-based reporting interface for Active Directory. At the top, there is a navigation bar with 'YOUR LOGO' on the left and 'Administrator | Help | Support | Sign out' on the right. Below this is a menu with 'Home', 'Search', 'Reports', 'My Favorites', and 'Basket'. A secondary menu lists report categories: 'User Reports', 'Password Reports', 'Group Reports', 'Computer Reports', 'Organizational Unit Reports', and 'Exchange Reports'. The main content area is divided into sections for each category. The 'User Reports' section includes 'General' (All Users, Recently Created/Modified Users, Users without/with Specified Manager, Recently Logged On, Never Logged On) and 'Account Status' (Enabled/Disabled, Locked Out, Expired, Recently Expired, Inactive, Soon-to-Expire, Non Expiring). The 'Password Reports' section includes 'General' (Recently Bad Logged on, Cannot Change Password, Never Expire) and 'Password Status' (Expired, Soon-to-Expire, Changed, Unchanged). The 'Group Reports' section includes 'General' (All Groups, without Members, Members, Managed, Unmanaged). The 'Computer Reports' section includes 'General' (Workstation, Domain Controllers, by OS, Trusted for Delegation, Created/Modified, Managed, Unmanaged) and 'Account Status' (Inactive, Enabled/Disabled). The 'Organizational Unit Reports' section includes 'General' (All OUs, Empty OUs, OUs with Users Only). On the right side, there is a 'quick search' box and a 'My Panel' sidebar with links to My Favorites, My Properties, My Team, My Department, My Managed Objects, My Approvals, My Requests, and My Settings.

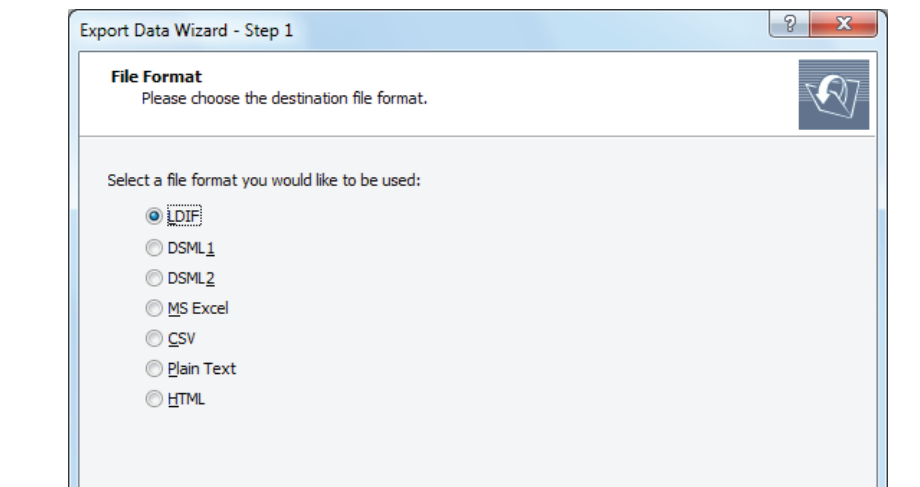
Tracking Changes in Active Directory

Any change performed in Active Directory via Adaxes can be tracked. Such operations as password reset, change of group membership, change of permissions can be easily reviewed. For critical operations, email notifications or approval requests can be sent.



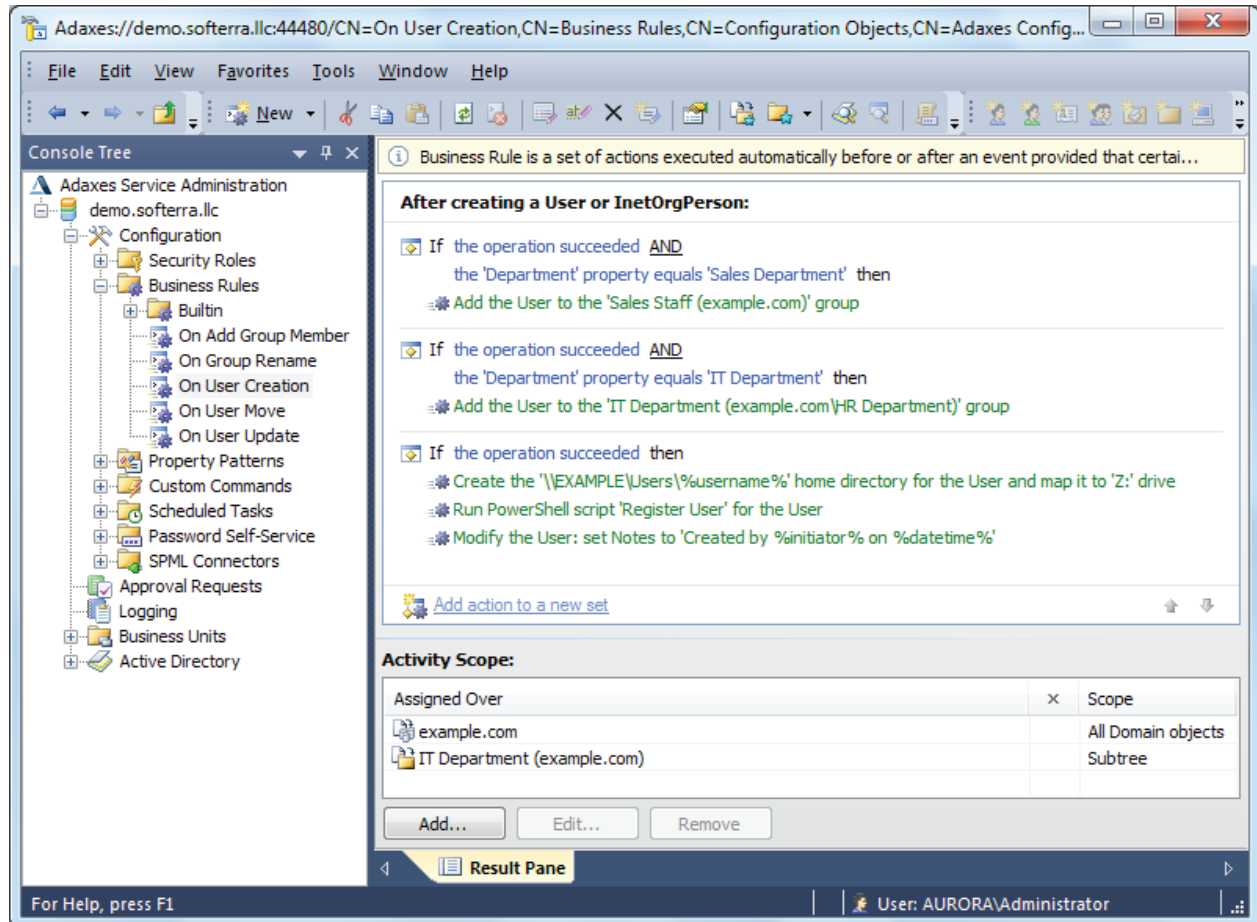
Backup and Restore Capabilities

Using Softerra Adaxes you can perform periodic manual or scheduled backup of Active Directory data to avoid possible loss of information.



Automating Internal Controls

Softerra Adaxes allows you to automate implementing and maintaining internal controls with its extensive automation functionality. Automation not only contributes to the controls efficiency, but also reduces the costs of maintaining compliance.



Much more from Softerra Adaxes

Softerra Adaxes provides lots of other helpful features and improvements to automate and secure AD management, maintenance and administration. With its enhanced and granular role-based security, automation capabilities, approval-based workflow, and enterprise policies enforcement rules, Softerra Adaxes grants efficient user lifecycle management for your enterprise. For more information, see [Softerra Adaxes Features](#).

Disclaimer. The information contained herein is intended solely for the general informational purposes and cannot grant any successful audits. You must evaluate, and bear all risks associated with, the use of any information provided hereunder, including any reliance on the accuracy, completeness, safety or usefulness of such information. Any information contained herein is subject to change without prior notice.